



*The First in Synthetics*®

## Synthetic Stationary Natural Gas Engine Oil SAE (20W) 40

**Formulated to Provide Top Efficiency in  
Stationary Engines Fueled by Natural Gas**



### *Product Description*

AMSOIL Synthetic Stationary Natural Gas Engine Oil (ANGS) delivers continuous protection in stationary natural gas engines calling for an SAE 40, low-ash lubricant. Its shear-stable formula qualifies it as a multi-grade 20W-40 so it can be used over a broad ambient temperature range, eliminating the need for seasonal oil changes.

### *Controls Wear*

AMSOIL Synthetic Stationary Natural Gas Engine Oil is formulated with low sulfated ash to minimize carbon deposits and port blockage, resulting in reduced maintenance and extended equipment life. Advanced anti-wear and anti-scuff protection helps control valve recession and wear on piston rings, cylinder liners and bearings during continuous severe-service operation in stationary natural gas engines.

### *Keeps Engines Clean*

AMSOIL Synthetic Stationary Natural Gas Engine Oil is engineered with premium base oils and additives to improve engine lubrication by keeping oil passages clean. Its balanced formula allows for a high total base number (TBN) to protect against corrosion while meeting low ash requirements.

### *Controls Nitration*

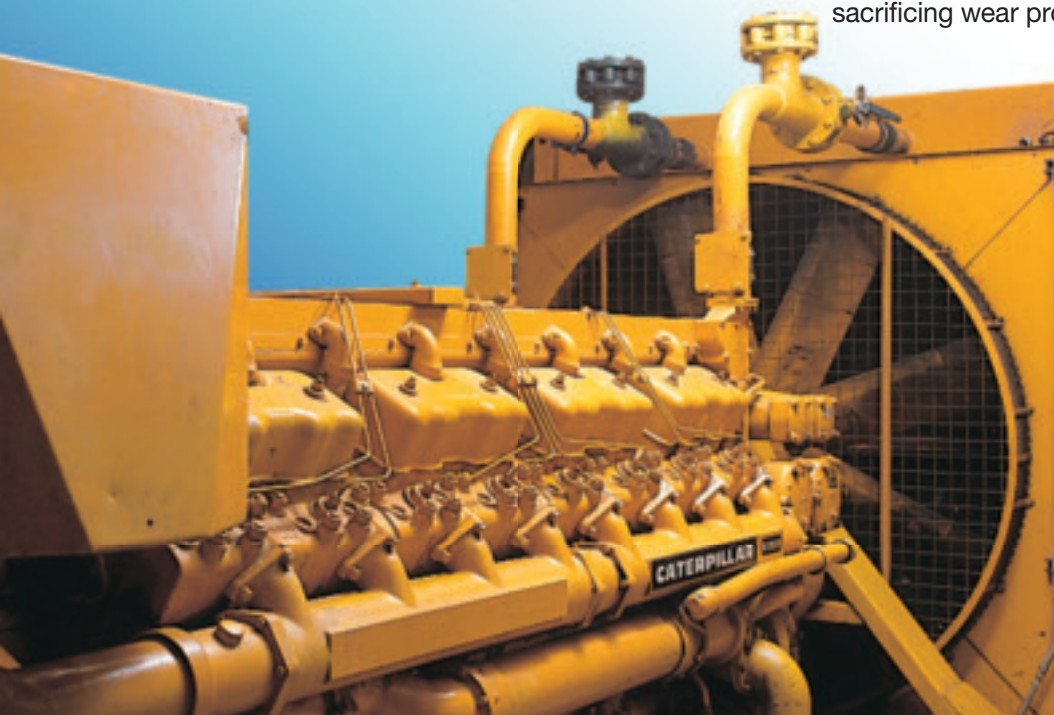
Nitration is a common concern in natural gas engines and can cause oil to thicken, reducing operational efficiency. AMSOIL Synthetic Stationary Natural Gas Engine Oil is naturally resistant to nitration, delivering maximum protection in natural gas engines.

### *Protects Emission Systems*

AMSOIL Synthetic Stationary Natural Gas Engine Oil is formulated with low zinc and phosphorus levels to prolong the life of emission catalyst systems without sacrificing wear protection.

### *Delivers Continuous Protection*

AMSOIL Stationary Natural Gas Engine Oil may be used for extended drain intervals when monitored by an oil analysis program. If extending oil drain intervals, change the oil filter at the engine manufacturer's recommended interval.



# TYPICAL TECHNICAL PROPERTIES

## AMSOIL Synthetic Stationary Natural Gas Engine Oil (ANGS)

Ash Content, % (ASTM D-874)	0.46
Kinematic Viscosity @ 100°C, cSt (ASTM D-445)	14.3
Kinematic Viscosity @ 40°C, cSt (ASTM D-45)	101.0
Viscosity Index (AASTM D-2270)	146
NOACK Volatility, % weight loss (g/100g) (ASTM D-5800)	4.4
Flash Point, °C (°F) (ASTM D-92)	252 (486)
Fire Point, °C (°F) (ASTM D-92)	272 (522)
Pour Point, °C (°F) (ASTM D-97)	-36 (-33)
Four-Ball Wear Test (40 kgf, 75°C, 1200 rpm, 1 hr.) Scar, mm (ASTM D-4172B)	0.35
High-Temperature/High-Shear Viscosity @ 150°C 1.4 x 10 <sup>6</sup> S-1, cP (ASTM D-5481)	4.6
TBN	5.6

### Applications

AMSOIL Synthetic Stationary Natural Gas Engine Oil is recommended for use in stationary four-stroke and select two-stroke engines that require low-ash (<.50%) engine oil and are fueled by natural gas, including those from the following manufacturers:

- Bergen
- Caterpillar
- Cooper-Bessemer (two-stroke)
- Dresser-Rand (Clark) (two-stroke)
- Dresser-Rand (Worthington) (two-stroke)
- Dresser-Rand
- Jenbacher
- MAN B&W
- MDE
- MAN Brons
- Mirrlees Blackstone
- MWM Deutz
- Niigata
- Ruston
- Wärtsilä NSD
- SEMT Pielstick
- Superior
- Waukesha

### Note

AMSOIL Synthetic Stationary Natural Gas Engine Oil should not be used in automotive engines or vehicular engines that run on propane or natural gas.

### Mixing AMSOIL

AMSOIL Synthetic Stationary Natural Gas Engine Oil is compatible with conventional petroleum oils and other synthetic lubricants; however, mixing AMSOIL Stationary Engine Oil with other oils will shorten the oil's life expectancy and reduce the performance benefits. AMSOIL does not support extended drain intervals where oils have been mixed.

Aftermarket oil additives are **not recommended** for use with AMSOIL Synthetic Stationary Natural Gas Engine Oil.

AMSOIL products and Dealership information are available from your local AMSOIL Dealer.

